

# Ascend Full Face Mask

## Quick Start Guide



Detach the lower strap by sliding the loop off the quick-release slot.



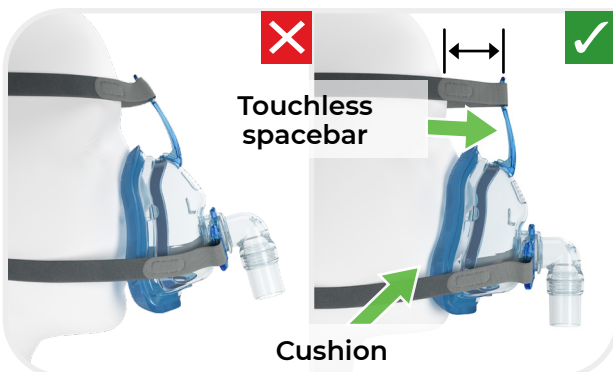
Slip the headgear over your head and reconnect the lower strap on to the quick-release hook. Place the top portion beneath the bridge of the nose and assure the bottom of the cushion sits below the bottom lip.



Adjust the lower headgear straps to assure a comfortable fit and seal.



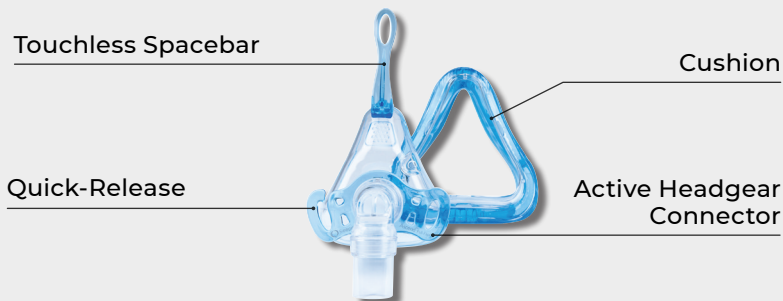
Adjust the upper headgear straps to ensure the mask has a comfortable fit beneath the bridge of the nose. You should not feel pressure on the nose.



When adjusting the fit of your mask, ensure the touchless spacebar DOES NOT contact the forehead when tightening the top straps. Only the blue AIR°gel cushion should contact the skin.

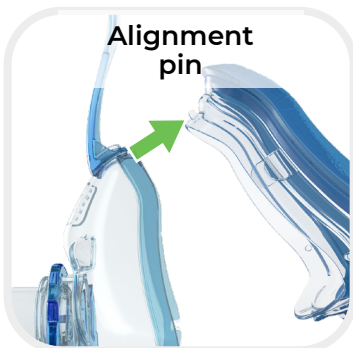
# Ascend Full Face Mask

## Assembly / Dissassembly



### Dissassembly

To change the mask cushion, separate the cushion from the mask frame by gently squeezing the cushion ring (not the AIR°gel cushion) near the left and right alignment pins while pulling away from the mask.



### Assembly

Ensure the cushion is oriented correctly by positioning the top alignment pin as shown.



With the top pin in place, push the bottom two cushion alignment pins into the notches. Ensure the support tabs stay outside the mask shell.